



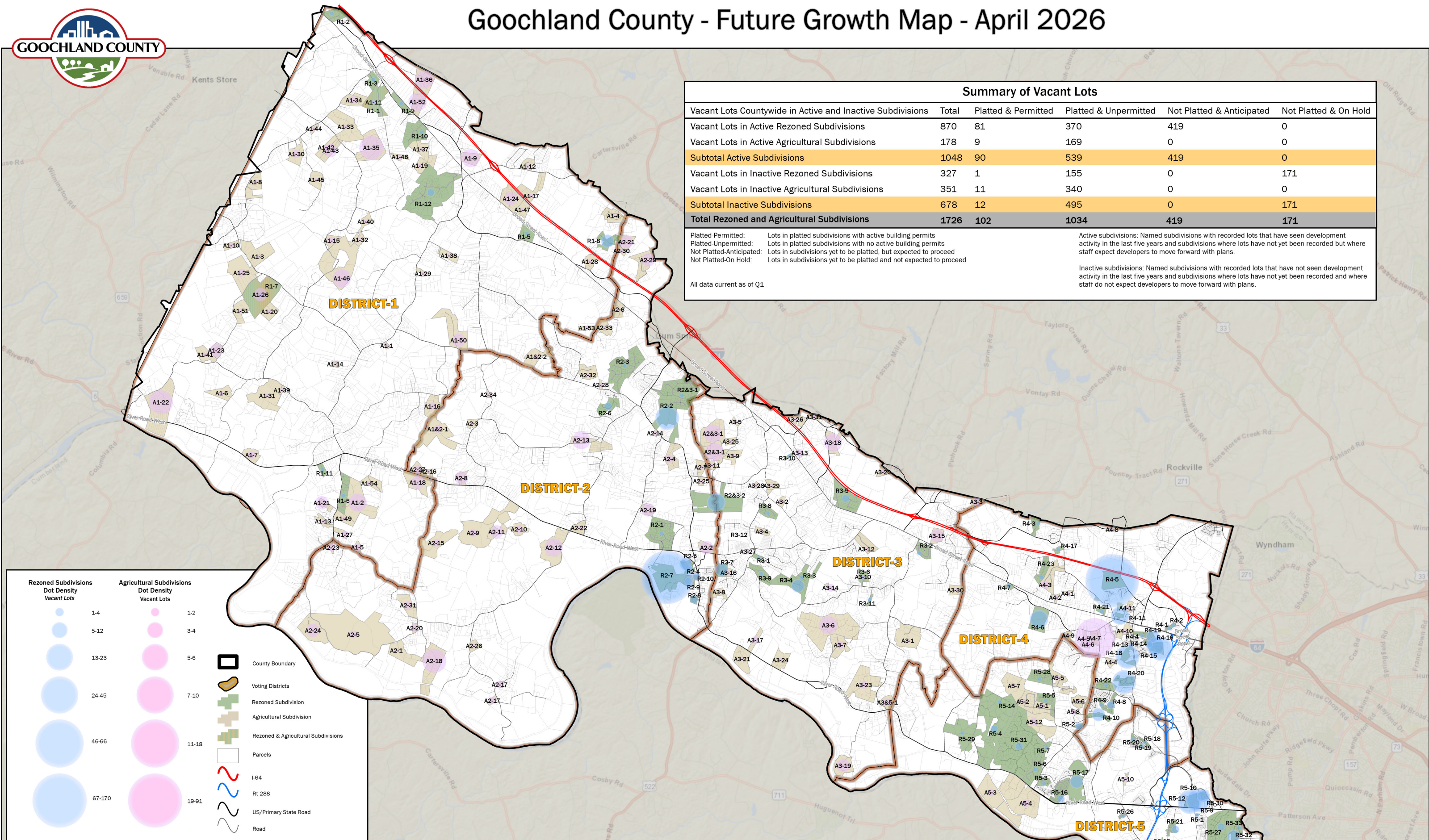
Goochland County - Future Growth Map - April 2026

Summary of Vacant Lots					
Vacant Lots Countywide in Active and Inactive Subdivisions	Total	Platted & Permitted	Platted & Unpermitted	Not Platted & Anticipated	Not Platted & On Hold
Vacant Lots in Active Rezoned Subdivisions	870	81	370	419	0
Vacant Lots in Active Agricultural Subdivisions	178	9	169	0	0
Subtotal Active Subdivisions	1048	90	539	419	0
Vacant Lots in Inactive Rezoned Subdivisions	327	1	155	0	171
Vacant Lots in Inactive Agricultural Subdivisions	351	11	340	0	0
Subtotal Inactive Subdivisions	678	12	495	0	171
Total Rezoned and Agricultural Subdivisions	1726	102	1034	419	171

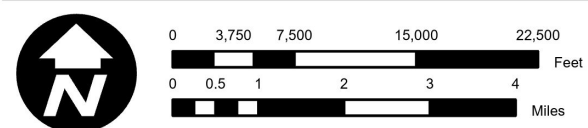
Platted-Permitted: Lots in platted subdivisions with active building permits
 Platted-Unpermitted: Lots in platted subdivisions with no active building permits
 Not Platted-Anticipated: Lots in subdivisions yet to be platted, but expected to proceed
 Not Platted-On Hold: Lots in subdivisions yet to be platted and not expected to proceed

All data current as of Q1

Active subdivisions: Named subdivisions with recorded lots that have seen development activity in the last five years and subdivisions where lots have not yet been recorded but where staff expect developers to move forward with plans.
 Inactive subdivisions: Named subdivisions with recorded lots that have not seen development activity in the last five years and subdivisions where lots have not yet been recorded and where staff do not expect developers to move forward with plans.



Rezoned Subdivisions Dot Density Vacant Lots	Agricultural Subdivisions Dot Density Vacant Lots	
1-4	1-2	County Boundary
5-12	3-4	Voting Districts
13-23	5-6	Rezoned Subdivision
24-45	7-10	Agricultural Subdivision
46-66	11-18	Rezoned & Agricultural Subdivisions
67-170	19-91	Parcels
		I-64
		Rt 288
		US/Primary State Road
		Road



Map reflects unimproved lots in named subdivisions as of County Assessor first quarter (Q1) Real Estate Extract.
 Proffered Subdivisions (green): Subdivisions created through rezoning. Parent Tract Subdivisions (brown): Subdivision created through by-right splits process.
 For a downloadable map, visit <https://www.goochlandva.us/242/Planning-Zoning>
 Disclaimer: Analysis performed for planning and growth management purposes only. Contact Community Development for any parcel-specific inquiries.

Map Created by
 Goochland County
 Community Development
 and GIS Departments - 4/22/2026